

LEAKAGE CURRENT TESTER



The GLC-9000, leakage current tester, is used to perform leakage current (or called touch current) tests on medical electrical (IEC 60601-1) and general purpose electric & electronic (IEC 60990) equipment. This tester engages with nine measurement networks (or called Measuring Device) to provide the simulation of human body whilst the EUT (equipment under test) is taking a leakage current testing, in compliance with the specific standards or regulations such as IEC, UL, JIS...etc..

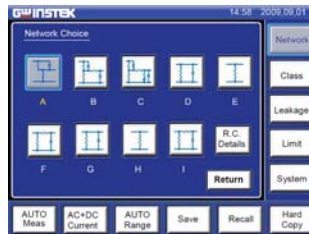
In order to provide a simple operation environment, the GLC-9000 equips large TFT LCD touch panel to configure system as well as to present the measurement settings information and result simultaneously. Besides, there are 50 preset testing conditions, which conform to IEC60990 and other standards, for general electric equipment can be recalled to reduce the setting time. In addition, 30 sets empty memory are available for user defined.

A Meter mode is also available for the GLC-9000, it uses the measurement terminal (T1/T2) to measure voltage as the same way of ordinary voltmeter. During the voltage measurement, the SELV function (safety extra low voltage) is applicable to detect the voltage value between measuring points whether exceeding the SELV setting.



Simple and Intuitive System

The color TFT touch screen makes operation intuitive and simple, whilst making it easier to observe test result.



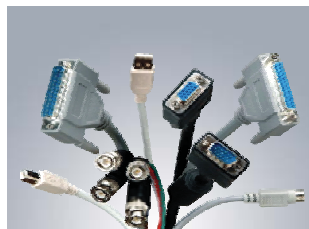
Various Measurement Network

Nine Measurement Network are available for measuring the leakage current of electrical and medical equipment.

Standard No.	Applicable Electrical Equipment
IEC60950	Information Technology Equipment
IEC60335	Household and Similar Electrical Appliances
IEC60065	Audio, Video and Similar Electrical Appliances
IEC60745	Hand-held Motor-Operated Electric Tools
IEC60598	Luminaires
IEC61010	Electrical Equipment for Measurement, Control, and Laboratory Use

Preset Test Conditions

50 preset standard test conditions conforming to IEC 60990 for general electric equipment. Additional 30 sets empty memory for user defined



Various Standard Interfaces

The various practical interfaces are equipped as standard making control convenient and flexible.

GLC-9000

FEATURES

- Suitable for Medical Electrical & General Electrical of Leakage Current Measurement
- Touch Panel with Color LCD Display
- 9 Different Measurement Network to Simulate the Resistance of Human Body
- 50 Sets Preset Test Conditions Conform to the IEC 60990 ; 30 Sets Memories for Customer Defined
- 8 Different Types of Leakage Current for General Electrical & Medical Equipment
- Meter Function with SELV/CONV Function
- Upper & Lower Limitation for PASS/FAIL Judgment
- Various Leakage Current Measuring Mode : DC/AC/AC+DC/AC Peak
- Various Standard Interfaces : RS-232/ GPIB/USB Host & Device/EXT I/O



Front



Rear Panel

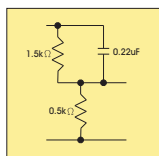
APPLICATIONS

- Production Testing of Medical Equipments
- Research & Design
- Quality Assurance Verification

MEASUREMENT NETWORK (MD)

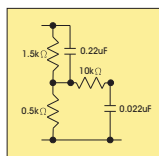
MD-A

For: IEC60990/60995



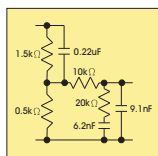
MD-B

For: IEC60990/60950



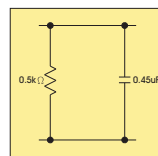
MD-C

For: IEC60990/60598



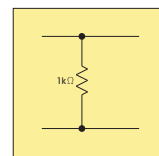
MD-D

For: IEC60335-1/UL1563



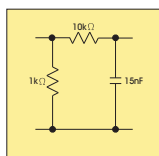
MD-E

For: JIS B8561/UL2601-1



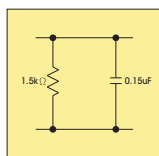
MD-F

For: IEC60601-1/UL2601-1



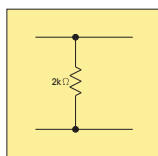
MD-G

For: UL554NP/1310



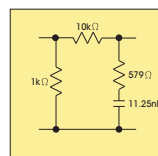
MD-H

For: general application



MD-I

For: JIS B8561/UL554NP



Note 1. The standard numbers that are listed are only example. 2. The networks listed can be used with all applicable standards.

SPECIFICATIONS

	Ranges	Range	Resolution	Accuracy
DC	25.00mA 5.000mA 500.0μA 50.00μA	5.00mA ~ 25.00mA 0.500mA ~ 5.000mA 50.0μA ~ 500.0μA 4.00μA ~ 50.00μA	10μA 1μA 0.1μA 0.01μA	±(0.2%rdg+3dgt) ±(0.2%rdg+3dgt) ±1.0%fs ±1.0%fs
AC or AC+DC	25.00mA 5.000mA 500.0μA 50.00μA	5.00mA ~ 25.00mA 0.500mA ~ 5.000mA 50.0μA ~ 500.0μA 4.00μA ~ 50.00μA	10μA 1μA 0.1μA 0.01μA	10Hz<f≤100kHz ±(2.0%rdg+6dgt) 100kHz<f≤1MHz ±(2.0%rdg+10dgt) ±(2.0%rdg+10dgt) ±(2.0%rdg+10dgt) ±2.0%fs ±2.0%fs
AC PEAK	75.0mA 10.00mA 1.000mA 500.0μA	10.0mA ~ 25.0mA 1.00mA ~ 10.00mA 500μA ~ 1.000mA 40.0μA ~ 500.0μA	100μA 10μA 1μA 0.1μA	20Hz<f≤1kHz ±(2.0%rdg+2dgt) ±(2.0%rdg+2dgt) ±2.5%fs ±4.0%fs 1kHz<f≤10kHz ±(5.0%rdg+10dgt) ±(5.0%rdg+10dgt) ±5.0%fs ±5.0%fs
EUT Voltage	300V	85V ~ 300V	0.1V	±(2%rdg+10dgt)
EUT Current	10A	0.5A ~ 10A	0.1A	±(2%rdg+5dgt)
METER MODE	AC/DC AC+DC AC Peak	10.0 ~ 300.0V 10.0 ~ 300.0V 15.0 ~ 430.0V	0.1V 0.1V 0.1V	±(3%rdg+2V) ±(3%rdg+2V) ±(3%rdg+2V)
INTERFACE	RS-232, GPIB, USB Host & Device, EXT I/O			
POWER SOURCE	For GLC-9000 : AC 100V/120V/220V/230V±10%, 50/60Hz For EUT : AC 85V ~ 250V, 50/60Hz			
DIMENSIONS & WEIGHT	330 (W) x 150 (H) x 350 (D) mm; Approx. 5kg			

Specifications subject to change without notice.

LC-9000GD1DH

ORDERING INFORMATION

GLC-9000 Leakage Current Tester

STANDARD ACCESSORIES

User manual x 1, Alligator clips x 4 (Red x 2/Black x 2)
Test lead (GTL-117) x 2, Foil probe x 1, Power cord x 2